

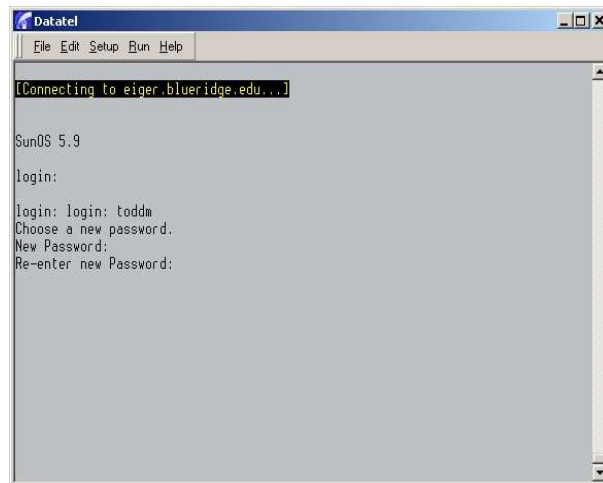
Instructions for Logging into Colleague 12/31/2005

Due to the recent operating system upgrade, all passwords have to be reset.

To do this, start Colleague and log in as usual:



You will see the Alert dialog box and the Datatel window. Click OK in the Alert dialog box. Next, type the same password that you typed when logging in (above).



Your password change and login should be complete. If you have any questions or this process fails to log you into Colleague, please call the Help Desk at 1895.